



C. DAYE – ONE OF THE FOUNDING MEMBERS OF DR. BUZZARD'S ORIGINAL SAVANNAH BAND

The Music Legends... Where Are They Now?



G.E.M.A. NEWS & MUSIC BIZ NEWSLETTER

The Music Legends-Then & Now!

by Dolores Dauphine

A true native New Yorker, vocalist Cory Daye became one of the most distinctive voices of the Disco era. Dr. Buzzard's Original Savannah Band brought forth a new sound by fusing Jazz, Rhythm & Blues, Swing, Soul, Latin, Big Band and Disco beats with strong lyrics and rich melodic flavor. Cory's soft, endearing and unique vocals were what made an impression on the everlasting timeless classics like "Cherchez La Femme", "I'll Play The Fool", "Hard Times", and "Sour and Sweet". "Cherchez La Femme" was a huge hit single and number one on the Disco charts in 1976. DBOSB was managed by the now pop mogul icon **Tommy Mottola**. Their album went **Gold**, and in 1977, the band was nominated for a **Grammy Award for "Best New Artist Of 1976"**. In 1979 Cory released her first solo album, "Cory and Me" on Mottola's New York International Record label. This album included the hits "Pow Wow", "Green Light", and the international top hit tune "A Wiggle And A Giggle".

Cory continued on and was a featured vocalist and part of the renowned group **Kid Creole & The Coconuts**, which kept her recording and traveling worldwide. In 1993 Cory appeared in the film "Lambada, The Forbidden Dance" alongside Kid Creole performing two songs including the

American version of the Lambada originally by **Kaoma**. Today, Cory still continues to wow her audiences and struts her stuff on stage as a solo performer at numerous venues and concert halls.

In 2014, Cory added to her many credits an off-Broadway debut performance in the hilarious stage comedy hit "My Big Gay Italian Wedding" at the St. Luke's Theater in New York.

In 2014, Cory Daye's music is transcending time and is as refreshing now as it was back then. The G.E.M.A. Foundation is pleased to announce and acknowledge that Cory Daye is one of the 2014 G.E.M.A. Golden Mic Honors Honorees. We salute her creative contributions to the entertainment arts in her efforts to preserve real melodies and rhythmic patterns in her artistic work.

Join The G.E.M.A. Foundation in paying tribute and celebrating the creative works of all of the **G.E.M.A. Golden Mic Honors Honorees on Saturday, October 11th, 2014 at The Grand Opera House @ 818 N. Market St. in Wilmington, Delaware.**



G.E.M.A. Vice President

Vivienne A. Crawford, Esq. former special education school teacher and now a successful lawyer, entertainment consultant and community advocate. She's now the Executive Producer & TV host of the television show "Conversations Across Time" which can be seen Tuesday night's @ 10:00 p.m. on Philly Cam- Comcast channel 66 or Verizon FIOS 29.

G.E.M.A. Music Ambassador

The G.E.M.A. Foundation is proud to announce and welcome Mr. Stephen C. Kelly as our 2014 Music Ambassador. He is the founder and member of the original r&b group "The Volcanos" who are known for their hit "Storm Warning". Stephen has a new book entitled "Behind the Curtains".



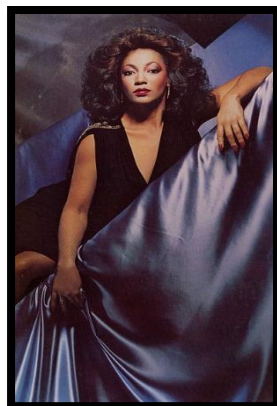


T

More Linda Clifford

Multi-platinum Artist

by M.L. Cedeno



Linda Clifford has made her mark among the classic R&B singers and also as a legendary Disco Diva. This award winning artist is a true entertainer who began her career at the early age of four, and was singing on local New York television programs at seven years old. Three years later, she appeared with **Harry Belafonte** and **Sydney Poltner** in a television special for the NAACP.

After high school, **Linda** focused on jazz music as a creative direction. She sang with the Jericho Jazz singers and later toured the country with her own trio, **Linda** and the **Trade Winds**. She then changed creative directions, she started singing R&B, Pop and found early success with **Paramount Records** with the single **Long Long Winter**. **Linda**, then signed a record deal with music icon **Curtis Mayfield** – on his label **Curtn Records**.

Her first album from Curtn Records featured the single **"From Now On"**, but it was her follow-up discolorized single **"If My Friends Could See Me Now"** which propelled her into the international spotlight and shot this tune to #1 on the dance charts bringing her numerous accolades including an **American Music Award** nomination for **Best New Artist**, **Cashbox Magazine's Best New Artist Award**, **Record World Magazine's Best New Female Vocalist** and **Best Pop Album** designations. More #1 successes followed, with Curtn releases entitled **"Don't Come Crying To Me"** and **"Shoot Your Best Shot"** produced by

Isaac Hayes and **Linda's** smash hit **"Runaway Love"** which topped the Billboard's Disco/Dance charts at #1 for 16 weeks and reach #3 on Billboard's R&B charts. A hit duet single with **Curtis Mayfield**, **"Between You Baby and Me"**, resulted in a full length album entitled **"The Right Combination"**. This music project produced 2 more hits **"Red Light"** which appeared on the multi-million selling, Oscar winning #1 soundtrack album **"Fame"**. The song earned a Grammy nomination, spent 9 weeks at #1 on Billboard's charts and appeared on **Linda's** follow-up hit album **"I'm Yours"**..

Linda decided at the peak of her career to focus on her family and raise her children so she redirected her career and began singing for commercials. She sang jingles for **McDonald's**, **Cherry Coke**, **Maybelline**, **Pontiac Tropicana**, **Oldsmobile**, **Michelob Lite**, and the theme to **"The Phil Donahue Show"** including the police drama **"Chicago"**.

Now, **Linda** is still conquering the music industry with her vocal style and returning to the music charts with her dance hits, **"Changin"** and **"Philly Groove"** Billboard Magazine exclaimed, **Linda Clifford's** vocal light still burns bright. A gifted songwriter, **Linda** signed with **Warner-Chappell Music**. Her compositions have been performed by such top artists as **Cher**, **Gladys Knight**, **Gloria Gaynor**, and **Martha Wash**, who scored a top #5 hit of **Linda's** tune **"You Lift Me Up"**. In 2005, she was presented with a **Life Time Achievement Award at the Chicago Music Awards**. **Linda Clifford** is a 2014 G.E.M.A. GMH Honoree.

The Discipline of a Golden Gem



Evelyn "Champagne" King is one of the few disco stars who successfully weathered the decline of disco to have more hits through the 1980's. Not only did she manage to survive as a star into the 1980's, she is still recording and touring frequently today. Evelyn was born into a musical family. She was born in The Bronx and her father, Eric King, performed often as a stand-in singer for various bands, occasionally at the legendary Apollo Theatre. Later, her family moved to Philadelphia, and 14-year-old Evelyn began performing professionally with a local band.

At age 15, Evelyn's big break came in storybook fashion. Legend has it she was working, subbing for her sister as a cleaning woman at **Philadelphia's Sigma Studios**, and singing "A Change Is Gonna Come." **Soul producer T. (Theodore) Life**, a former member of the band Instant Funk, heard her singing. He took her to RCA, signed her to a contract, and produced her first album **Smooth Talk**. The album included the disco smash **"Shame."** She earned some notoriety as a teenager singing adult-themed songs in an adult-sounding voice, but Evelyn was on her way. The follow-up, **"I Don't Know If It's Right"** was a major mid-tempo R&B hit.

She began working with former B.T. Express member Kashif as her producer. The result in 1981 was **"I'm in Love,"** a #1 dance hit. She followed up with the **Get Loose** album in 1982 and another smash, the classic anthem **"Love Come Down."** Kashif maintained an open, uncluttered production style that let Evelyn's strong, rich voice shine through. **Evelyn Champagne King** is one of the 2014 G.E.M.A. Golden Mic Honors Honorees.



SOCIAL MEDIA & THE ARTS



Social Media Can Generate Leverage In The Arts

Social Media can help veteran artists and student artists connect and collaborate on numerous projects, exchange information and provide a platform for presentation and distributions of their creative works.



Behind The Music ...

Teaching the business principles behind the music gives the G.E.M.A. students leverage in today's market place.



Tim Marshall & Larry Cotton of R&B Showcase

by Dolores Dauphine

PHILADELPHIA CLEF CLUB OF PERFORMING ARTS

736-738 South Broad Street
Philadelphia, Pa. 19146
<http://www.clefclubofjazz.org>
Mr. Lovett Haines, Director of Ed

R&B SHOWCASE RADIO SHOW

Classic & Contemporary R&B Music
Hosts: Tim Marshall & Larry Cotton
<http://www.rnbshowcasemag.com>
tkmproductions@hotmail.com

LARRY COTTON – R&B HALL OF FAME INDUCTEE

Larry Cotton, co-host of the **R&B Showcase radio show**, USA correspondent for the **R&B Showcase Magazine** and former International correspondent for **"In The Basement Magazine"**. R&B Showcase magazine is a soul music magazine featuring artists' interviews, music reviews, charts and music business news. Larry loves music and its history. His special segment "Yesterday and Today" keeps the listeners up to date on the history of R&B music and the artists' who made this music popular. He is an advocate for education and believes in sharing so that the youth can gain access to his

The Learning Curve



Students are always ready to learn when the subject matter is interesting. Learning about the arts provides stimulation, curiosity and excitement for the student. It also provides a creative outlet for their creativity and visionary works.



South Jersey radio veteran and event producer **Tim Marshall**, founder and host of the **R&B Showcase Radio Show & Magazine**. R&B Showcase is an online live radio broadcast airing Monday evenings from 9 p.m. until 12 midnight (EST). Listen to the show at www.rnbshowcasemag.com. The format provides special segments like "Rhythm & Views", "Concert News", and much more. Classic and contemporary R&B is aired on the show. Tim is also active in the community. Tim and Larry Cotton have provided Entertainment Business Workshops & Career Opportunity Days for high school students at the South Jersey Branch Library. He is committed to helping and mentoring as many young athletes as he can. Congrats to Tim Marshall another 2014 G.E.M.A. Honoree.

wisdom. In today's market place when it comes to creative development in the arts whether its broadcasting, radio production, programming, management or simply writing the copy for a commercial, it is all part of the learning process for the younger artist to gain access and understand how to utilize these elements in their plans for success.



MUSIC EDUCATION IS IMPORTANT

All across the country schools are cutting their budgets. Music education is being slashed from public schools. Researchers have found a correlation between music and the development of children's mental abilities. Studies prove that listening to music at a young age helps a child do better in math and sciences. Music has a powerful and positive influence on the brain.



"Who's That Lady"? Alfa Anderson's new solo anthem "Former Lady of Chic" is the answer. As one of the original vocalists' in Chic, Alfa helped producers Nile Rodgers and Bernard Edwards define a whole new era in popular music while building a mountain of gold and platinum albums for the Chic Organization. "Former Lady of Chic" pays homage to Alfa's legacy of a soul and dance music icon. It also marks the beginning of a new chapter in her celebrated career. During August of 2013, Alfa and her film crew brought the lyrics of "Former Lady of Chic" to life in the streets of New York. The "Former Lady of Chic" tune was written and produced by Eluriel (Tinkr) Barfield, Eluriah Barfield, and Taurie Barfield. The video directed by Freddy Mfuko, follows Alfa Anderson through different areas and neighborhoods of New York. From Time Square to the High Line, both new and dedicated fans greet the singer along the way. The storyline is based on truth: generations of music lovers are all toasting the return of Alfa Anderson.



The Global Entertainment Media Arts Foundation is proud to present its 2nd annual G.E.M.A. Golden Mic Honors Tribute Ceremony this coming October 10th, 2014 at the Deep Blue Bar & Grill-American Seafood House in Wilmington, Delaware. For tickets contact us @ 215-512-8251.

It give us great pleasure to be able to celebrate, honor and pay tribute to such outstanding contributors in the entertainment arts. The 2014 G.E.M.A. Golden Mic Honors Honorees are pioneers, trend setters, innovators and some of the most talented creative artists who are still creating and working in the global market today. Our 2014 G.E.M.A. Golden Mic Honors Honorees include **The Three Degrees, Linda Clifford, Cory Daye, Martha Wash, Wardell Piper, Carol Douglas, Carol Williams, Denise Montana, Alfa Anderson, Evelyn Champagne King, Anita Ward, James Arena, James Rosin, Bruce Webb, Bobby Eli, Tom Moulton, Gene Leone, Maria Torres, Mimi Brown, Larry Cotton, and Tim Marshall.** So come and join us on Saturday, October 11th, 2014 @ The Grand Opera House. Come celebrate the "Golden Decade of Disco Divas"- show time 7:30 p.m. For tickets: 1-800-37 Grand or www.TheGrandWilmington.org

ALFA ANDERSON FORMER LADY OF CHIC

A little music history on where Alfa Anderson's been and who she has worked with through the years. A New Yorker, by way of Augusta, Ga. Alfa Anderson began her music career as a professional with a performance on Cannonball Adderley's Big Man (1976) which premiered at Carnegie Hall, and also starred in the Lincoln Center's production of "Children of the Fire" a piece by legendary trumpeter "Hannibal Melvin Peterson".

Throughout the 70's, she recorded with a variety of artists, like Nat Adderley, Ray Barretto, Odyssey, Major Harris, and Roy Buchanan. Alfa also sang on the Quincy Jones produced sound track "The Whiz" (1978) and Atlantic Records' Live at Monterux (1978) the historic live album produced by Arif Mardin and



Herbie Mann. We congratulate Alfa Anderson on being a 2014 G.E.M.A. Golden Mic Honors Honoree.



G.E.M.A. Programs & Services

The G.E.M.A. Concert Series Program:

*** The program is designed to create and support opportunities for professional and student American performing artists to obtain successful touring and performance engagements.

The G.E.M.A. Musical Arts Exchange Program:

*** The program provides the opportunity for ten (10) student artists from (13yrs.-17yrs.) of age to travel annually to one of the following locations - Canada, Virgin Islands, Europe, Africa, Brazil, Panama and/or South America for the purpose of engaging in the learning process of the individual host country's culture, music and media arts resources which will allow these students to document their learning experiences and findings in regards to their particular art form.

The Entertainment Industry Career Development Program:

*** The music business education program is designed to provide students with training, techniques, methodology and principles of the business preparation in the entertainment arts. Scholarship assistance is available to the underprivileged student.

The G.E.M.A. Short Film Festival Program:

***The film/video program allows students to present their work to a live viewing audience of their peers.

The Global Entertainment Media Arts Foundation's

mission is dedicated to the preservation and documentation of the musical and cultural arts of America. The G.E.M.A. Foundation provides the right platform for artistic and creative works in the entertainment arts to be viewed and distributed worldwide.

The G.E.M.A. Foundation preserves the traditions of American culture by capturing audio recording, digital documentations, pictorials and archiving this content and these unique performances, methods, and techniques of these treasured and talented creators to be shared with future generations. Artistic outlets are one of the most important ways in which we influence the world and create and shape our environment. We have the power to shape our world with the power of our voices and our artistic expressions.

The G.E.M.A. Foundation is a 501 (c) (3) organization and organized exclusively for charitable, literary and educational purposes.

